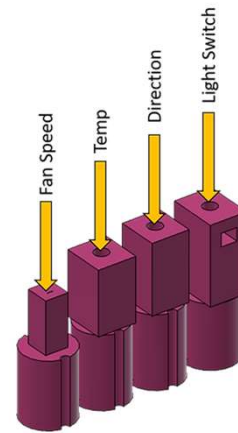


# FITTING Instructions



**Will fit T5-T6 vans 03-19 with manual dials, not climate controls**

**Please be aware that this modification has been happening for years in many forms, we are merely supplying the adapters and golf MK4 dials to complete the kit**

**You will need to cut off and remove the back of the dials to fit with the adapters**

**Do not force the original dials off the panel. If they do not come off easily we advise you not to make the modification. Easily means by hand with no more than gentle force. The original dials should pop off easily. if you pull hard or force them off you will break the mechanism inside. they will not come off unless they are set at 12 o'clock.**

**Pop them back to us and we will refund in full.**

## **Preparing the Aluminium Dials (Heater Dials only)**

Use a hacksaw or a Junior Hacksaw to remove the stalks from the back of the dials. You will need to remove the stalk to level with the back of the dial. See photo at the base of the page.



## **Preparing the Adapters**

### **Step 1**

Turn the dials to 12 o'clock and the FAN SPEED to No. 2 (12 o'clock). This will align the notch on the rear of the mechanism but again, do not force the dials off if they are stiff or stuck!

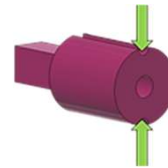
## Step 2 Prepare the adapters.

TAKE the two (large) adapters and snap off from the pack, the adapter on the left fits in the temperature dial, the middle adapter goes in the right dia. The parts are made from PA220 Nylon. Due to tolerances when manufacture there can be a +\_0.25mm difference. Use some 1000 grit paper and rub down until a snug fit to the panel. DO NOT force them in. Slowly slide the adapters into the mechanism until you feel some resistance until they fit snugly into the panel. These are designed to fit the left and the right dial, they will only fit in the correct side. They are also not square, they are rectangular so ensure they are orientated correctly.

Take the **centre adapter**, do not push it into the panel! These are rectangular not square so ensure it is placed correctly.

We Have designed two notches to show 12 & 6 o'clock to help with orientation.

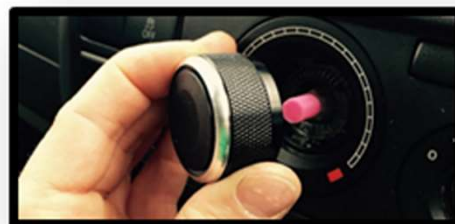
It also stops a vacuum when fixing later on.



You may need to rub this adapter with a small piece of glass paper to ensure a perfect fit, slide it in slowly and do not force it in. When it is placed inside the panel, turn turn one click to the left to fan speed 1. **You don't really need to remove the adapters once you are happy with the fit but using a flat edged screwdriver firmly placed on the end of the panel star just in case it is still too tight, This prevents any damage. The flat edged screwdriver can be used on the two side dials too if they need to be removed before fitting the new dials.**

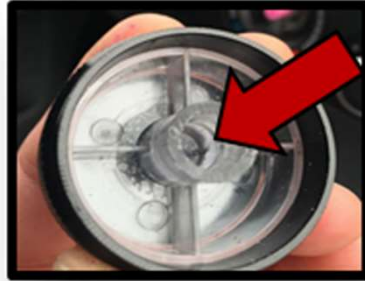
## Step 3

Once you have found the perfect fit, slide the aluminium dials over the adapters. The dials should sit flush with the dash and sit flush with the existing holes on the panel, this prevents light bleed. they do not need to be pushed inside the diameter of the hole rebate as this will make the dials difficult to turn and bind on the panel.



#### Step 4

Remove the aluminium dials but not the adapters. You will need to use (Not Supplied) epoxy resin (araldite) to bond the adapter into the tube. Epoxy is great as it gives you time to align the dials on the panel at 12 o'clock and Speed 1 for the centre one. Place a **VERY Small** amount on the inside of the dial tube without using too much to stop it oozing out (really small as there is little tolerance to avoid a vacuum, and I mean really small)



#### Step 5

Switch on your sidelights; this is to ensure there is no light bleed out the back of the dials. Once you are happy with the amount of glue used (you will get roughly 5 mins before it sets) place the new dials over the adapters allowing them to sit on the panel square and straight. give them a little spin and reset to 12 o'clock and speed 1.